

# User Recommendation NEUMO BioConnect® CleanLip

## Upgrade to metallic sealing CleanLip on BioConnect® Flange Connections DN 10-DN 125



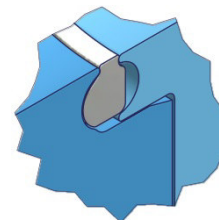
Flange Connection BioConnect®



Fitting Situation (Sectioning)



CleanLip



Mounting Condition



Cleanability Test CleanLip



Sticker for Marking

**Any NEUMO BioConnect® Flange Connection (supplied since 2002) can be upgraded with the CleanLip sealing element. In order to ensure optimum tightness and perfect bacteriology, the following aspects must be taken into account:**

1. The CleanLip sealing element is delivered in inspected state and individually packed. To avoid any damages of the sealing contour, it should not be unpacked prior to assembly.
2. The original sealing contour of the BioConnect® Flange Connection with male and female flange (Form R + V) must be free of any damages, in its original state, without any pressure or impact marks.
3. The original sealing contour of the BioConnect® Flange Connection must be free of dirt, particles or any other residues.
4. The CleanLip sealing element must be inserted into the female flange (Form R) with the rounded contour in such a way that the flat side becomes visible towards the male flange (Form V).
5. To avoid warping, stress or damages, the screws must be tightened crosswise and with a torque wrench. For tightening torques, please see table below.
6. BioConnect® CleanLip is a product provided for single use only.
7. The sealing element is marked with its product name CleanLip, dimension, material and heat number.
8. We add a sticker to all deliveries, which can be used to mark BioConnect® Flange Connections with installed CleanLip sealing element!

⇒ **Please do fully observe the above mentioned aspects and without stint. Only by doing so, this high-precision product can meet the requirements.**

	M8	M10	M12	M14	M16
Coefficient of Friction	Tightening Torque				
0,10	14,5	30,0	50,0	79,0	121,0
0,12	16,3	33,0	56,0	89,0	136,0
0,14	17,8	36,0	62,0	98,0	150,0
0,16	19,3	39,0	66,0	105,0	162,0
0,18	20,4	41,0	70,0	112,0	173,0
0,20*	21,5	44,0	74,0	119,0	183,0
0,30	25,5	51,0	88,0	141,0	218,0
0,40	27,6	56,0	96,0	152,0	237,0

**\* Recommended tightening torque!**

The Generally recognized rules of technology shall apply.

### Technical Information for Tightening Torques of Screws:

In practice, different coefficients of friction may occur. Please check pursuant to the individual application! The tightening torques are just reference values!  
The tightening torques shall apply for screws EN 24014 / 24017, strength class 70 at room temperature.